

Joh. Seb. Bach (1685 - 1750) Kantate BWV 140 "Wachet auf ruft uns die Stimme"

Basso Continuo



5



9



13



17



22



26



32



37



41



46

Basso Continuo



51



56



61



65



69



73



77



84



90



94

Basso Continuo

94

Musical notation for measure 94, starting with a bass clef and a key signature of two flats (B-flat and E-flat). The notation includes quarter notes, eighth notes, and sixteenth notes.

98

98

Musical notation for measure 98, continuing the piece with similar rhythmic patterns.

102

102

Musical notation for measure 102, featuring a change in the bass line.

106

106

Musical notation for measure 106, showing a key signature change to one flat (B-flat).

110

110

Musical notation for measure 110, continuing the melodic development.

114

114

Musical notation for measure 114, featuring a key signature change to one sharp (F-sharp).

118

118

Musical notation for measure 118, continuing the piece.

121

121

Musical notation for measure 121, featuring a key signature change to two sharps (F-sharp and C-sharp).

124

124

Musical notation for measure 124, continuing the melodic line.

128

128

Musical notation for measure 128, concluding the section.

131

Basso Continuo



Musical notation for measure 131, featuring a bass clef and a key signature of two flats (B-flat and E-flat). The notation consists of a single staff with a series of eighth and sixteenth notes, some beamed together.

134



Musical notation for measure 134, featuring a bass clef and a key signature of two flats. The notation consists of a single staff with eighth notes and rests.

138



Musical notation for measure 138, featuring a bass clef and a key signature of two flats. The notation consists of a single staff with eighth notes and rests.

141



Musical notation for measure 141, featuring a bass clef and a key signature of two flats. The notation consists of a single staff with eighth notes and rests.

145



Musical notation for measure 145, featuring a bass clef and a key signature of two flats. The notation consists of a single staff with eighth notes and rests.

149



Musical notation for measure 149, featuring a bass clef and a key signature of two flats. The notation consists of a single staff with eighth notes and rests.

153



Musical notation for measure 153, featuring a bass clef and a key signature of two flats. The notation consists of a single staff with eighth notes and rests.

157



Musical notation for measure 157, featuring a bass clef and a key signature of two flats. The notation consists of a single staff with eighth notes and rests.

161



Musical notation for measure 161, featuring a bass clef and a key signature of two flats. The notation consists of a single staff with eighth notes and rests.

164



Musical notation for measure 164, featuring a bass clef and a key signature of two flats. The notation consists of a single staff with eighth notes and rests.

168

Basso Continuo



Musical notation for measure 168, starting with a bass clef and a key signature of two flats (B-flat and E-flat). The notation includes quarter notes, eighth notes, and sixteenth notes.

172



Musical notation for measure 172, continuing the piece with similar rhythmic patterns.

175



Musical notation for measure 175, featuring a sequence of eighth and sixteenth notes.

178



Musical notation for measure 178, showing a mix of quarter and eighth notes.

181



Musical notation for measure 181, with a focus on eighth and sixteenth note patterns.

186



Musical notation for measure 186, including a variety of note values and rests.

190



Musical notation for measure 190, primarily consisting of eighth notes.

193



Musical notation for measure 193, featuring a more complex rhythmic structure with sixteenth notes.

197



Musical notation for measure 197, showing a steady flow of eighth notes.

201



Musical notation for measure 201, ending the page with a final note and a double bar line.

Joh. Seb. Bach Kantate BWV 140 "Wachet auf ruft uns die Stimme

Basso Continuo 

The first staff of music is in bass clef with a key signature of two flats (B-flat and E-flat) and a common time signature (C). It contains five measures of music. The notes are: G2 (half note), G2 (half note), G2 (half note), G2 (half note), and G2 (half note). The final measure contains a whole note G2.



The second staff of music is in bass clef with a key signature of two flats and a common time signature. It contains five measures of music. The notes are: G2 (half note), G2 (half note), G2 (half note), G2 (half note), and G2 (half note). The final measure contains a whole note G2.



The third staff of music is in bass clef with a key signature of two flats and a common time signature. It contains five measures of music. The notes are: G2 (half note), G2 (half note), G2 (half note), G2 (half note), and G2 (half note). The final measure contains a whole note G2.

Joh. Seb. Bach Kantate BWV 140 "Wachet auf ruft uns die Stimme"

Basso Continuo

4

6

8 *Fine*

11

14

18

21

23

25

Joh. Seb. Bach Kantate BWV 140 "Wachet auf ruft uns die Stimme

27
Basso Continuo

29

33

36

39

42

44

47

49

52

Joh. Seb. Bach Kantate BWV 140 "Wachet auf ruft uns die Stimme"

55

Basso Continuo

58

61

64

67

69

72

74

76

79

*da capo
dal Segno
al Fine*

Joh. Seb. Bach Kantate BWV 140 "Wachet auf ruft uns die Stimme

Basso Continuo



4



7



10



13



16



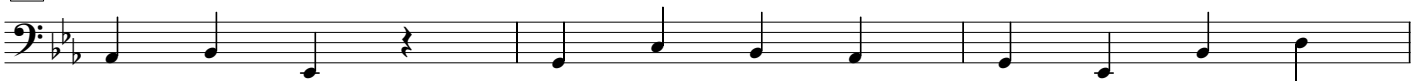
19



22



25



28



31



34



37



Joh. Seb. Bach Kantate BWV 140 "Wachet auf ruft uns die Stimme

40

Basso Continuo



43



47



49



52



54



57



60



63



66



69




72



Joh. Seb. Bach Kantate BWV 140 "Wachet auf ruft uns die Stimme

Basso Continuo



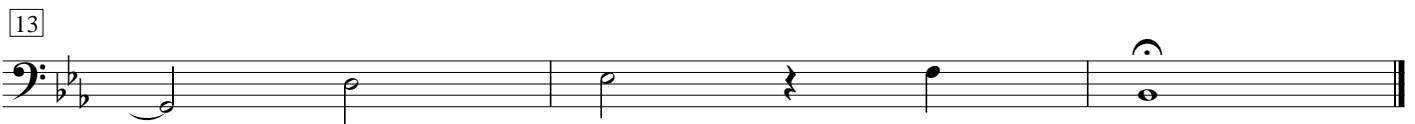
5



10



13



Joh. Seb. Bach Kantate BWV 140 "Wachet auf ruft uns die Stimme



Basso continuo

4

7

10

13

16

19

22

25

28

31

34

Joh. Seb. Bach Kantate BWV 140 "Wachet auf ruft uns die Stimme

37

Basso continuo



40



44



Fine

47



50



53



56



59



62



65



68



71



§

*Da capo
al Segno*

Joh. Seb. Bach Kantate BWV 140 "Wachet auf ruft uns die Stimme

Basso Continuo 

8 

17 

27 